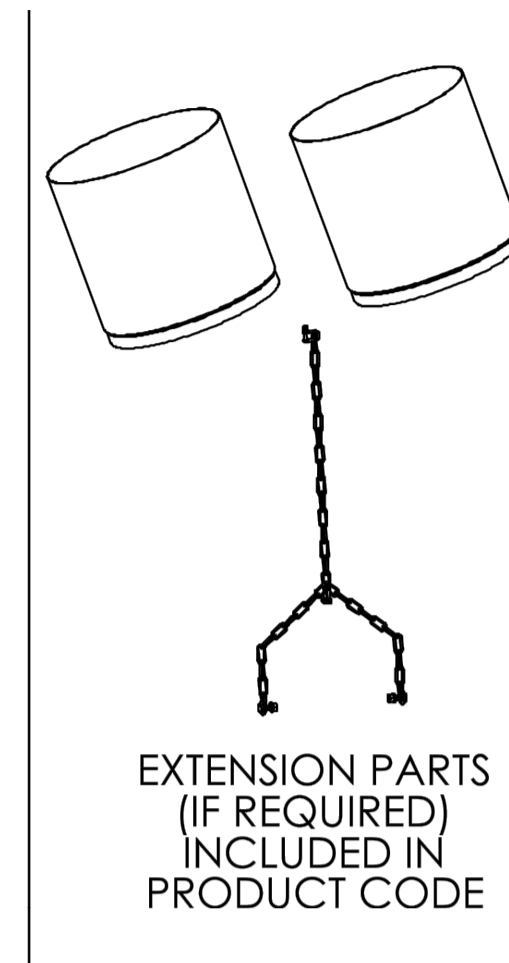
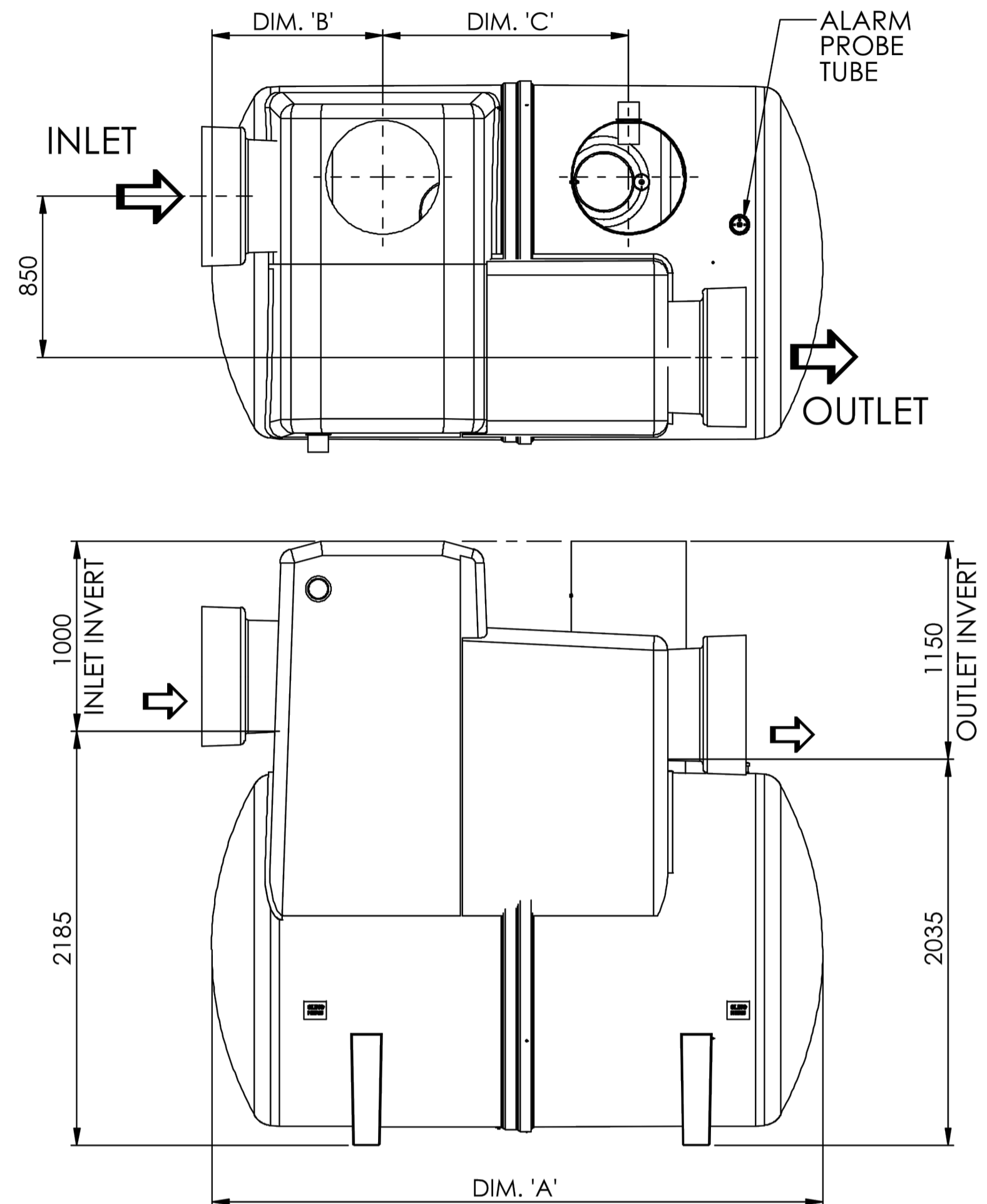
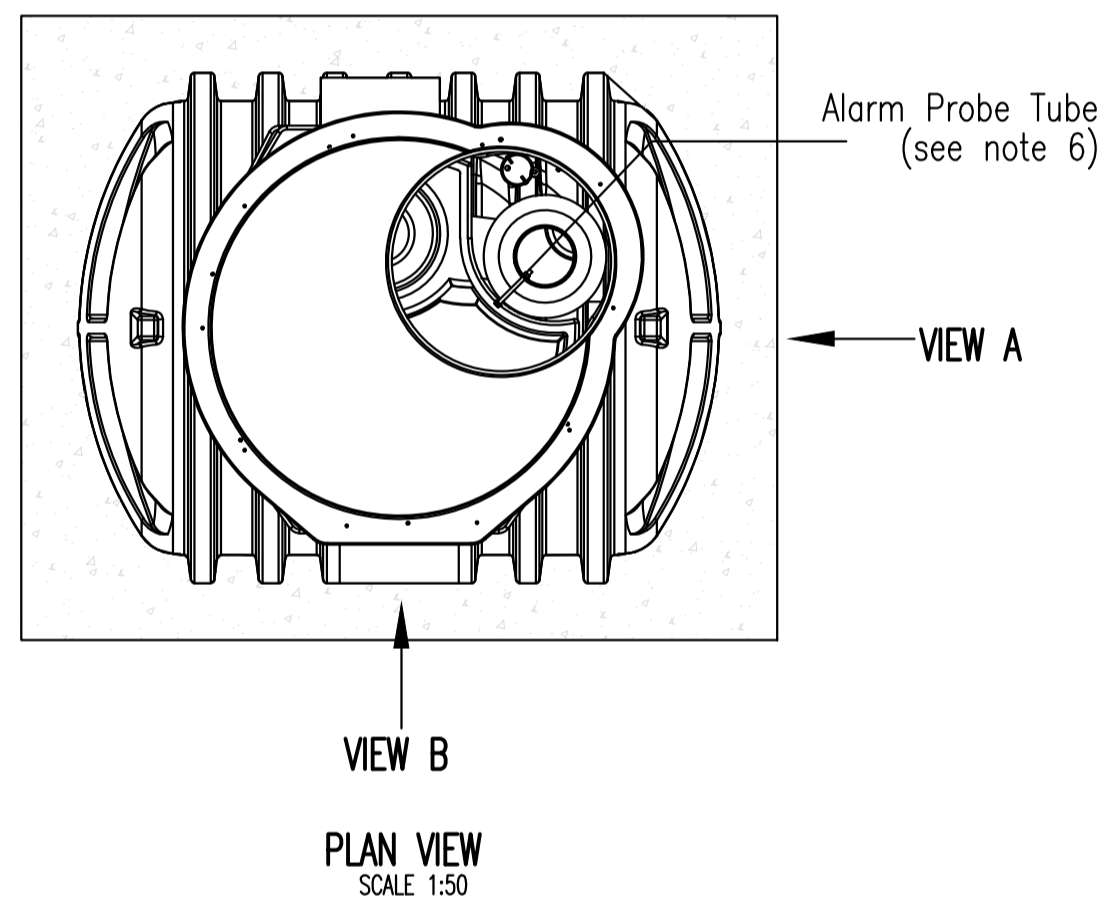
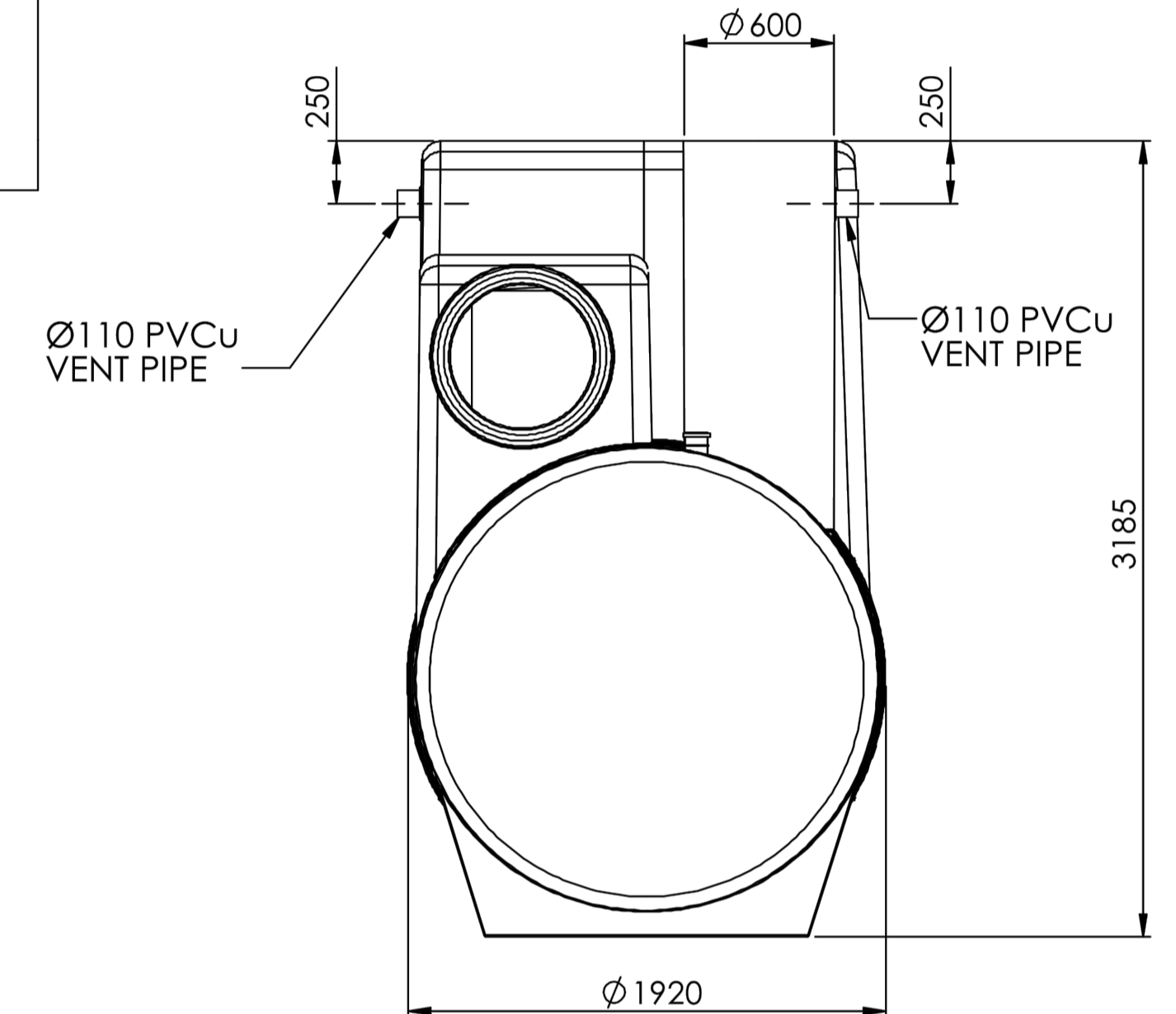


Notes:-

1. Inlet/Outlet pipes are plain pipe standard EN 858 states minimum connection sizes, units ordered with different sized connections are not fully compliant with the standard.
2. Extension necks for deeper inverts can be provided. These can be cut in 200 mm sections. Max 2.0m Invert recommended. Please ask our sales department for further details.
3. All units require appropriate cover and frame to suit applied loadings.
4. This drawing should be used for dimensional information only. It is essential that this drawing is read in conjunction with the installation guidelines from the supplier. 76 mm tube (internal) is supplied to house an oil alarm probe.
5. Wet site conditions - Concrete Backfill Dry site conditions - Pea Shingle Backfill
6. A Ø 76 mm tube (internal) is supplied to house an oil alarm probe.



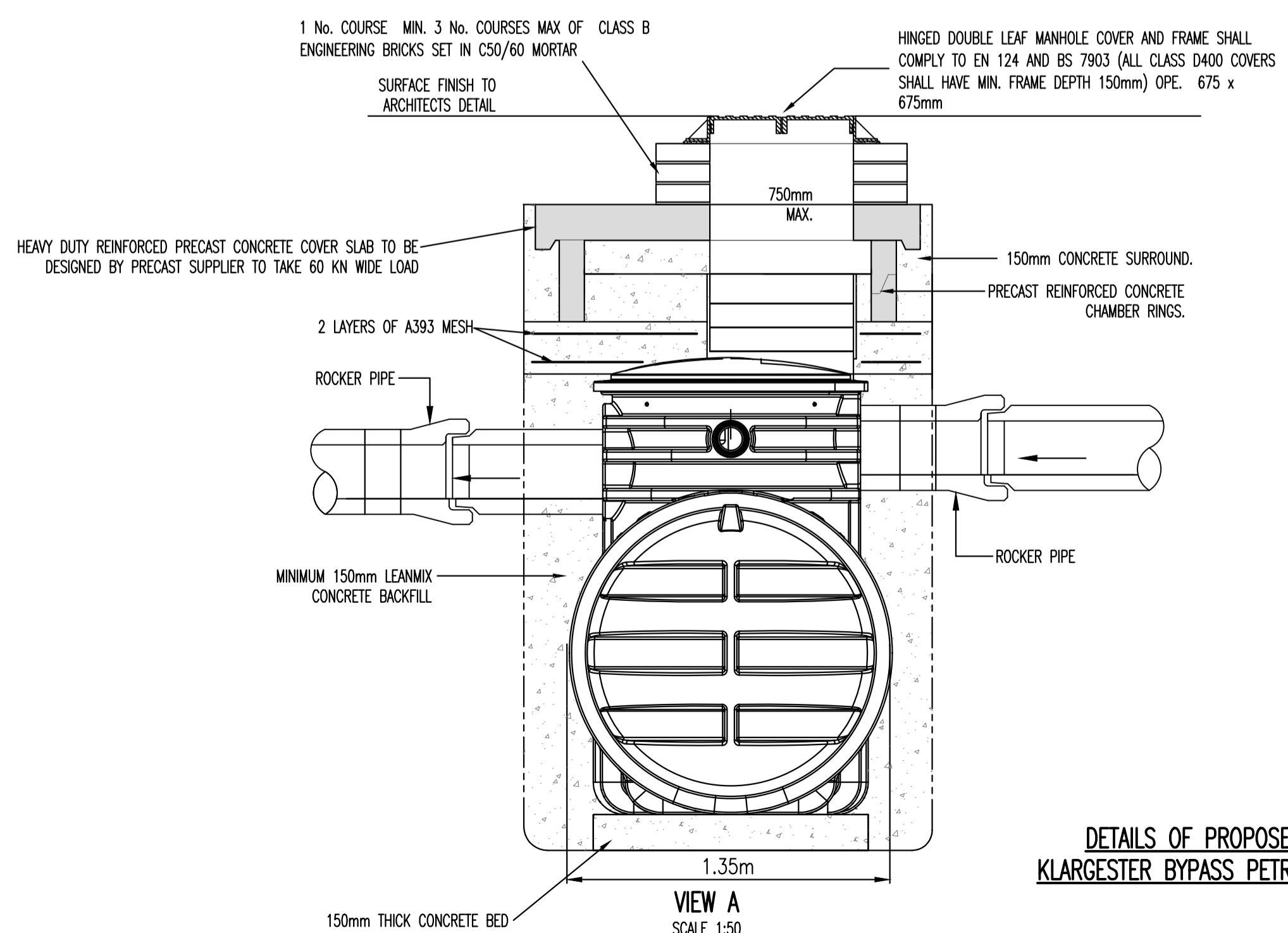
- NOTES
1. UNITS ARE SUPPLIED WITH THE STANDARD (MINIMUM) PIPEWORK SIZE, AND ORIENTATION SHOWN ON THE DRAWING. THE STANDARD EN858-1 STATES MINIMUM CONNECTION SIZES, UNITS ORDERED WITH DIFFERENT SIZE CONNECTIONS MAY NOT BE FULLY COMPLIANT WITH THE STANDARD. PLEASE CONSULT OUR SALES DEPARTMENT FOR DETAILS OF AVAILABLE OPTIONS, BUT PLEASE NOTE WE DO NOT ALTER INTERNAL PIPEWORK.
  2. ALL UNITS SUPPLIED ARE CLASS 1 AND INCLUDE A COALESCER.
  3. EXTENSION PARTS FOR DEEPER INVERTS CAN BE PROVIDED FOR ON SITE ASSEMBLY.
  4. ALL UNITS REQUIRE APPROPRIATE CONCRETE BASE, COVER AND FRAME TO SUIT APPLIED LOADINGS.
  5. THIS DRAWING SHOULD BE USED FOR DIMENSIONAL INFORMATION ONLY.
  6. A Ø76mm TUBE IS SUPPLIED TO HOUSE AN OIL ALARM PROBE.



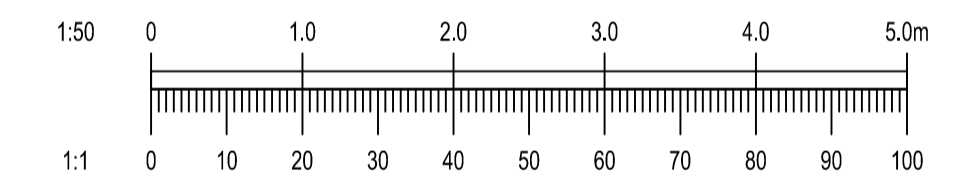
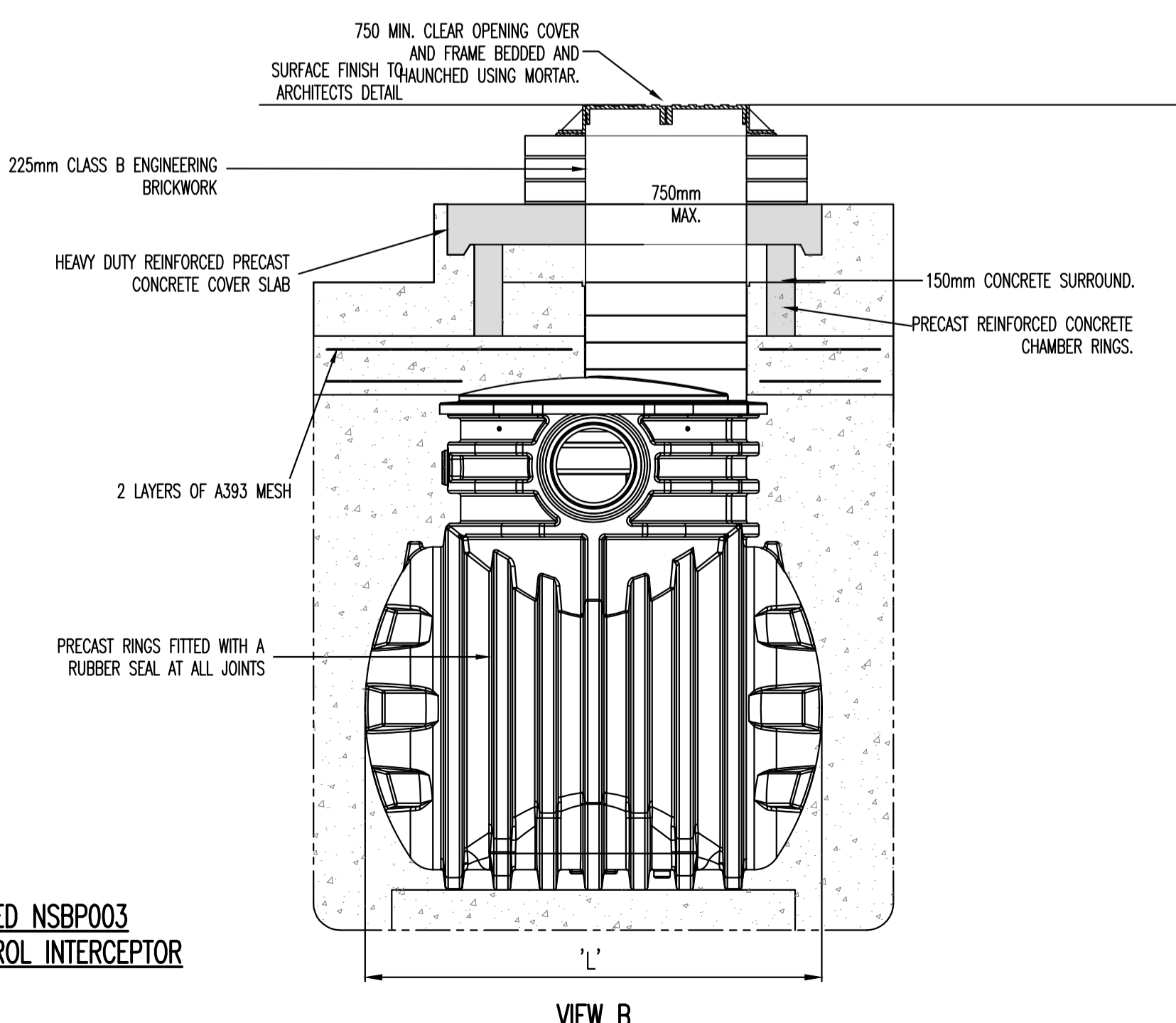
UNIT	NOMINAL FLOW (l/sec.)	DIM. 'A'	DIM. 'B'	DIM. 'C'	STD. PIPE Ø	APPROX. EMPTY WEIGHT (kg)	FALL ACROSS UNIT
NSBE040	40.0	3230	902	1300	500	713	150

DETAILS OF PROPOSED KLARGESTER BYPASS PETROL INTERCEPTOR NSBE040

N.T.S



DETAILS OF PROPOSED NSBP003 KLARGESTER BYPASS PETROL INTERCEPTOR



16/03/22	AN BORD PLEANALA SUBMISSION	PW	EC
REV. DATE	AMENDMENT	DRN	APPD

STATUS **FOR PLANNING ONLY NOT FOR CONSTRUCTION**

**Waterman Moylan**  
Engineering Consultants

BLOCK 8, EASTPOINT BUSINESS PARK, ALFIE BYRNE ROAD, DUBLIN D03 H3F4 IRELAND.  
Tel: (01) 664 8900 Fax: (01) 661 3618  
Email: info@waterman-moylan.ie www.waterman-moylan.ie

CLIENT	CAIRN HOMES PROPERTIES LTD.
ARCHITECT	MCORM ARCHITECTS
PROJECT	SHD AT HOLYBANKS, SWORDS
TITLE	PETROL INTERCEPTOR DETAILS

DRAWN PW	DESIGNED LRG	APPROVED EC	DATE MARCH 2022
SCALE AS SHOWN@A1	JOB NO. 17-088	DRG. NO. P240	REVISION -